

Cylindrical magnet with threaded insert type VND 02

REF 91.02

{ERREUR : balise [PRESTATION_CRITERE_ASOUT] inconnue}

High holding power / Rugged construction / Effective

Mounting, Clamping, Assembly

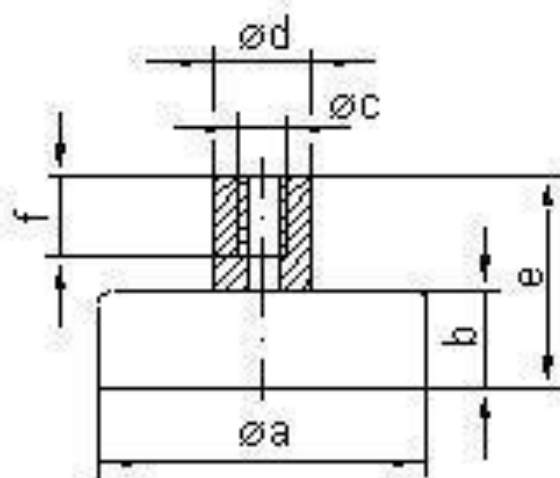
-Cylindrical magnets.

-Zinc-Plated steel encloser

Options



Reference	Poids en kg	A	B	C	D	E	F	G
91.02-6	0.002	6	4.5	M3	6	11.5	7	5N
91.02-8	0.003	8	4.5	M3	6	11.5	7	13N
91.02-10	0.004	10	4.5	M3	6	11.5	7	25N
91.02-13	0.005	13	4.5	M3	6	11.5	7	60N
91.02-16	0.007	16	4.5	M4	6	11.5	7	95N
91.02-20	0.016	20	6	M4	8	13	7	140N
91.02-25	0.027	25	7	M4	8	14	7	200N
91.02-32	0.045	32	7	M5	10	15.5	8	350N



G= Force - Force - Kraft