

# Permanent magnetic palett for spark erosion type PMA/SPARK

REF 40.60.01

{ERREUR : balise [PRESTATION\_CRITERE\_ASoust] inconnue}

High holding power / Stabil top plate / Rugged construction / Power adjustable / Waterproof construction / Force: : 100 N/CM<sup>2</sup> / Longer life

## Grinding, EDM, Control

- . Permanent magnetic chuck with NEODYNIUM magnets
- . Parallel fine pole pitch steel + brass
- . Without special adaptation

Nominal force : 100 N/cm<sup>2</sup>

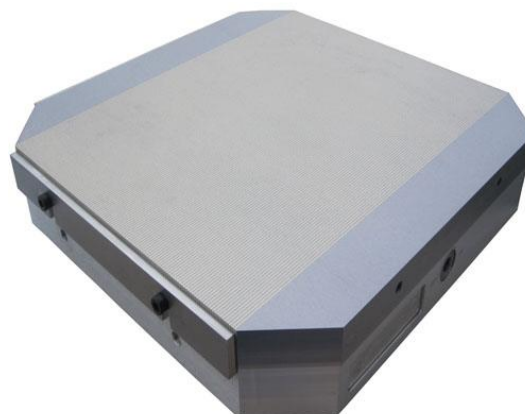
Admissible wear of top plate : 5 mm

Magnetic field height : 3 mm

## Options

All the paletts can be delivered in a simple version (without special machining) or for a palettizing system: EROWA-3R-HIRSCHMANN-V&B ...

A specialist can inform you further.



Reference	Poids en kg	A	B	C
40.60.01.150150	8	150	150	45
40.60.01.250150	13	250	150	45
40.60.01.240240	20	240	240	58
40.60.01.320320	32	320	320	58