

# Fixed magnetic tool type PMF

REF 17.18

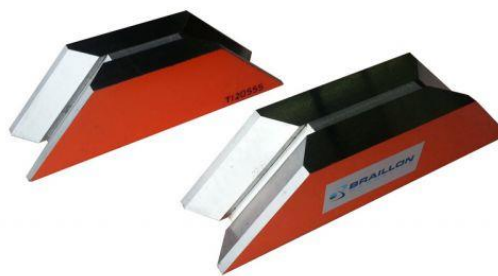
{ERREUR : balise [PRESTATION\_CRITERE\_ASOUST] inconnue}

High holding power / Longer life / Effective / Rugged & compact construction

## Positioning, Welding

- . Robust construction
  - . 2 magnetic faces
  - . With ON/OFF mechanism
- Positioning pieces with 45°, 90° or 135° during welding job

## Options



Reference	Poids en kg	A	B	C	D
17.18.152	1.2	152	45	41	30daN
17.18.178	1.6	178	45	41	50daN

D = Force

