

MAGNETIC BLOCK 4 WORKHOLDING FACES TYPE BAP4

REF 13.11

{ERREUR : balise [PRESTATION_CRITERE_ASoust] inconnue}

Rugged construction / Waterproof construction / Force: : 70 N/cm² / Longer life / Low magnetic field

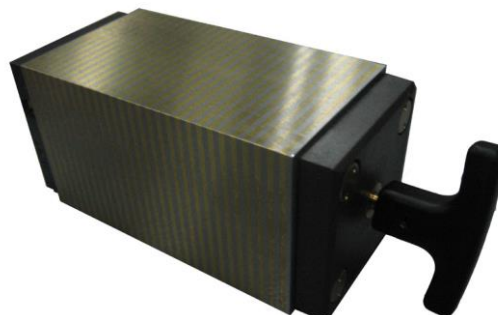
Grinding, EDM, Control, Machining

- . 4 workholding faces
- . With ON/Off mechanism

Nominal force : 70 N/cm²
 Admissible wear of top plate : 4 mm
 Magnetic field height : 2 mm

Options

Possible construction in stainless steel (model CP: force=50N/cm²)



Reference	Poids en kg	A	B	C	D
13.11.175	3	175	115	64	64
13.11.195	3.8	195	135	64	64
13.11.175CP	3	175	115	64	64
13.11.195CP	3.8	195	135	64	64

