

CIRCULAR PERM. MAGNETIC CHUCK TYPE NEOGRIP

REF 11.06

{ERREUR : balise [PRESTATION_CRITERE_ASOUST] inconnue}

Stabil top plate / Rugged construction / Power adjustable / Waterproof construction / Force : 85 N/cm² / Longer life / Low magnetic field

Grinding, EDM, Control, Drilling, Laser welding

- . Circular magnetic chuck with NEODYMIUM magnets
- . Low magnetic field
- . Fine pole pitch
- . Suitable for small and thin workpieces
- . Specially designed for high precision applications
- . Magnetic holding power adjustable from 0 to 100%

Nominal force : 85 N/cm²

Admissible wear of top plate : 5 mm

Magnetic field height : 4 mm

Options

Mounting flange

Concentric grooves for easy centering workpieces

Any other machining in the top or base plate

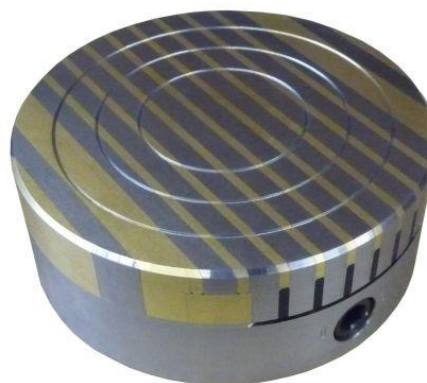
Palettizing systems: ITS-100 EROWA

Auxiliary top plate

Special design for laser welding

Palettizing system in the base plate:EROWA-3R-HIRSCHMANN-

V&B ...



Reference	Poids en kg	A	B	C	D	E	F	G
11.06.100	3	100	50	-	65	86	-	3xM6
11.06.130	5	130	50	-	90	120	-	4xM6
11.06.150	7	150	50	-	120	137	-	4xM8
11.06.200	12	200	52	-	150	182	-	4xM8

