

## GFC with spring-return attachments

Type GFC...  
R  
RA  
RB  
RC  
RD

Benefit from more than 100 years of experience. Use our unmatched end-to-end service: from off-the-shelf products to tailor-made designs - prototyped, tested and manufactured to your exact requirements.

Get free advice, a detailed quote or buy now

Email us at [sales@magnetschultz.co.uk](mailto:sales@magnetschultz.co.uk) or call +44(0)1483 794700

## Open frame solenoid type GFC with with spring return, shotbolt lock and fork end attachments

For each of six sizes of pull-and-push Type G FC:

**Spring-return assembly**

spring only (R)

**Fork end attachment –**

energise to pull (RA)

energise to push (RB)

**Shotbolt attachment –**

energise to lock (RC)

spring to lock (RD)



Spring attachment, fork end and shotbolt end.

### Construction

- stainless steel conical return spring
- High endurance, maintenance free PTFE bearings supporting armature and push-rod
- Coil insulation Class F for voltages up to 250V D.C. – external rectifier for AC supplies available separately

### Applications

- General purpose solenoids for service in:
  - robotics
  - automation
  - textile machines
  - lock mechanisms
  - office machines
  - packaging machines
  - coin sorting
  - medical and general automation

### Standards

- solenoid designed and tested to VDE 0580
- ISO 9001: 2008



GFC X 040 with spring and fork end attachment

GFC X		025		030		035	
Duty rating* continuous (100%)		100%		100%		100%	
Power consumption P <sub>20</sub>	W	6.3		7		10	
Stroke, rated (maximum)	mm	0	4 (8)	0	5 (9)	0	7 (11)
Magnetic force F <sub>M</sub> (without spring)	N	7	3	11	4	17	8
Spring force	N	3	2	4	2	6	4
GFC X		040		050		060	
Duty rating* continuous (100%)		100%		100%		100%	
Power consumption P <sub>20</sub>	W	14		20		26	
Stroke, rated (maximum)	mm	0	8 (12)	0	10 (15)	0	12 (20)
Magnetic force F <sub>M</sub> (without spring)	N	41	12	71	21	90	33
Spring force	N	12	5	18	9	27	16

\* other duty ratings on request - refer to data sheet GFC

### Performance Table

The Performance Table terms are fully defined and explained in our Technical Bulletin G XX and in VDE 0580/35.

### The Magnetic Force

(F<sub>M</sub>) listed is for the hot condition at 90% of the rated voltage, and will increase by approximately 20% at the rated voltage. The Magnetic Force does not include the Spring Force, which is listed separately; the forces given are those for continuous (100%) duty.

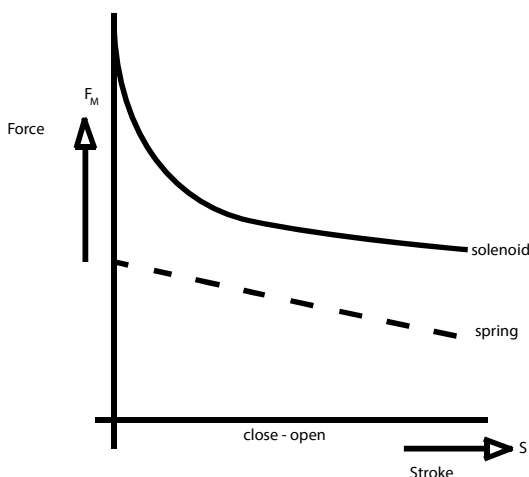
### Stroke

By adjusting the lock-nuts, the stroke can be increased: marginally for attachments RB and RC, and up to the maximum shown in brackets for assemblies RA and RD – though with a reduction of the Magnetic Force.

For full details of solenoid performance refer to data sheet GFC.

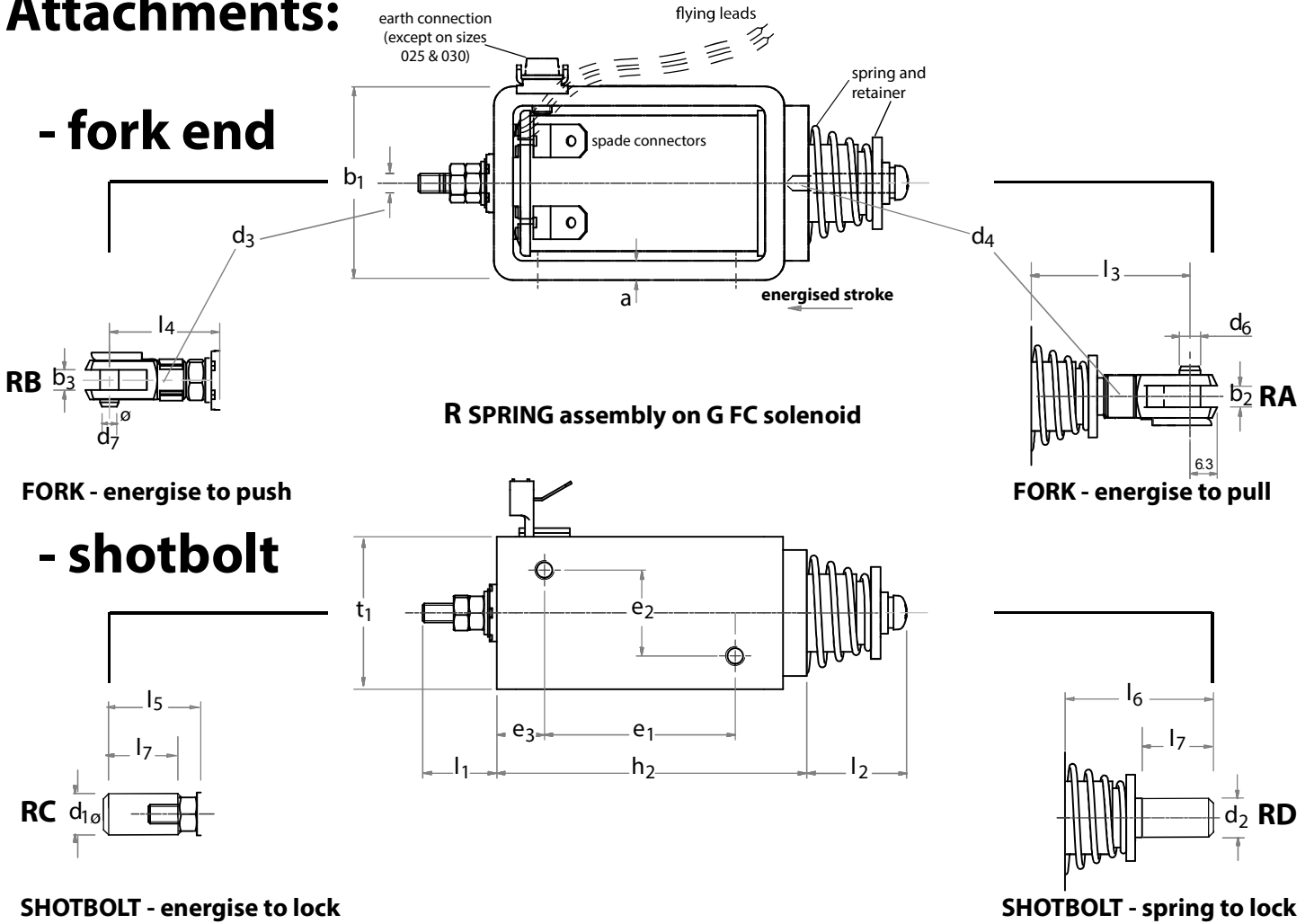
### Supply Voltages

The standard supply voltages are: 12V, 24 V and 205 V (for rectified 230 V AC).



Rectifier for AC supply

# Attachments:



Type		G FC					
Size		025	030	035	040	050	060
Dim.		Dimension (mm)					
Solenoid	a*	2	2.5	2	4	4	4
	b <sub>1</sub>	25	30	35	40	50	60
	d <sub>3</sub>	M3	M3	M3	M4	M5	M6
	d <sub>4</sub>	M3	M4	M4	M5	M5	M6
	d <sub>5+</sub>	M3	M3	M3	M4	M4	M5
	e <sub>1</sub>	20	25	30	40	45	50
	e <sub>2</sub>	12	14	18	18	28	32
	e <sub>3</sub>	7.5	7.5	10	10	12.5	15
	h <sub>2</sub>	39	45	55	65	76	88
	l <sub>1</sub>	12	12	12	16	18	22
	l <sub>2</sub>	13	16	18	20	30	33
t <sub>1</sub>	20	24	30	32	41	50	
Shotbolt (C, D)	d <sub>1</sub>	8	8	8	10	10	12
	d <sub>2</sub>	8	8	10	10	10	12
	l <sub>5</sub>	22	22	22	24	26	33
	l <sub>6</sub>	25	28	31	31	41	48
	l <sub>7</sub>	15	15	15	15	15	20
Fork end (A, B)	b <sub>2</sub>	4	4	4	5	5	6
	b <sub>3</sub>	4	4	4	4	5	6
	d <sub>6</sub>	4	4	4	5	5	6
	d <sub>7</sub>	4	4	4	4	5	6
	l <sub>3</sub>	29	30	33	36	47	53
	l <sub>4</sub>	23	23	23	25	31.5	37

Data may be changed without notice. Dimensions not guaranteed. Subject to our Standard Conditions

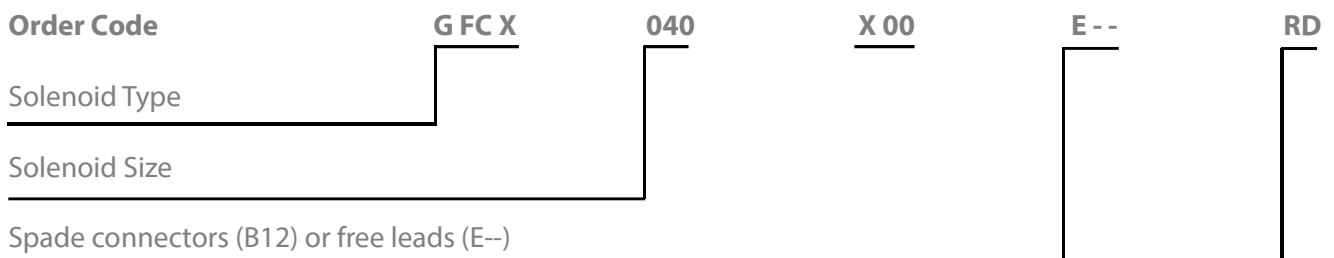
**Versions**

Custom, special and modified versions include

- Large fork end attachment
- Nose and tail plates
- Attachments for switch operation



Contact our technical department for assistance and advice on other custom options.



- Attachment(s):
- R - spring return assembly only
  - RA - fork, pulling; spring return
  - RB - fork, pushing; spring return
  - RC - shotbolt, energise to lock
  - RD - shotbolt, spring to lock

Specify also: Voltage (V)  
Duty Rating



**R, RA, RB, RC and RD Attachments (GFC 040).**



**E-- flying leads**

**B12- spade connector**

**Need more information or advice?**

Email one of our technical experts at [sales@magnetschultz.co.uk](mailto:sales@magnetschultz.co.uk) or call +44(0)1483 794700 now