

Purge / Drain Valve



Type G PC S 028 K69 V...

- Function: 2/2 NC
- Medium: H₂O, coolant, H₂, air, neutral gases
- Rated voltage: 12 VDC
- Rated power: < 1 A
- Holding current reduction to: < 0,5 A
- Duty cycle: 100 % ED with holding current reduction
- Rated operating pressure (NWP): up to 3,5 bara
- Backpressure: 0,9 to 1,1 bara
- Kv: 0,3 l/min, 0,7l/min, 1,5 l/min,
- Available nominal widths: 0,8 mm, 1,2 mm, 1,9 mm to 3mm
- Leakage (internal): 1 mbar l/s
- Leakage (external): 1x10⁻⁴ mbar l/s
- Ambient temperature: -40°C bis + 125°C
- Protection class: IP6K9K
- Service life: > 35 Mio. operations

Options on request:

- Components with valves and sensors (water separator)
- Various plug connections

Special features:

- Media separation

Plants and Sales

Magnet-Schultz GmbH & Co. KG
 Allgäuer Straße 30
 D-87686 Memmingen
 Phone +49 83 31 10 40
 info@Magnet-Schultz.de
 www.magnet-schultz.com



Headquarter Memmingen Sales | R&D | Production



Plant Memmingerberg R&D | Production



PREFAG, Walzbachtal
Sales | R&D | Production



Magnet- Schultz of America
Sales | R&D | Production



W.E. Schultz, Oberrindal
Sales | Production



Magnet- Schultz, Suzhou
Production



Magnet- Schultz, Italia
Sales

Magnet- Schultz, Surrey
Sales | Assembly



We focus on hydrogen ...

GAS VALVES FOR
MOBILE APPLICATIONS

High-Pressure Cut-Off Valve



Type G PC S 032 K69 V01

- Function: 2/2 NC
- Medium: H₂, natural gas, neutral gases
- Rated voltage: 12 VDC
- Actuation current: < 2,9 A
- Holding current reduction to: < 1,6 A
- Duty cycle: 100 % ED with holding current reduction
- Rated working pressure (NWP): 0 ... 700 bar
- Maximum pressure (MAWP): 1050 bar
- Nominal width main seat: 2,7 mm
- Nominal width pilot seat: 0,2 mm
- Kv: > 0,11 m³/h
- Leakage (internal/external):: 2x10⁻⁴ mbar l/s
- Ambient temperature: -40°C bis +85°C
- Protection class: IP6K9K
- Service life: > 75.000 operations
- Approval: EC79 (in preparation)

Options on request:

- Various electrical plug connections
- ATEX version for stationary applications
- Customer-specific mechanical interface

Special features:

- Small size

Safety Shut-Off Valve



Type G PC S 040 K69 V01 / V03

- Function: 2/2 NC
- Medium: H₂, natural gas, neutral gases
- Rated voltage: 12 VDC
- Actuation current: < 2 A
- Holding current reduction to: < 1 A
- Duty cycle: 100 % ED with holding current reduction
- Rated working pressure (NWP): 0 ... 21 bar
- Maximum pressure (MAWP): 25 bar
- Nominal width main seat: 8 mm
- Kv: > 0,9 m³/h
- Nominal width pilot seat: 1,2 mm
- Leakage (internal/external): 1 x 10⁻⁴ mbar l/s
- Ambient temperature: -40°C up to +85°C
- Protection class: IP6K9K
- Service life: > 75.000 operations
- Approval: EC79

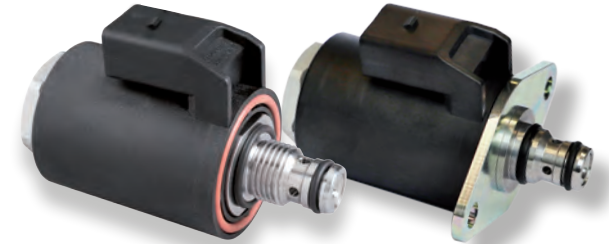
Options on request:

- Various electrical plug connections
- ATEX version for stationary applications
- Customer-specific mechanical interface

Special features:

- Two-step opening to avoid pressure shocks
- Seal seat optimized for cryogenic temperature

Flow Control Valve



Type G PC P 040 K69 V01 / V03

- Function: prop. flow control 2/2 NC
- Medium: H₂, natural gas, neutral gases
- Rated voltage: 12 VDC
- Limit current: 1,6 A
- Duty cycle: 100 % ED
- Nominal width: 2,8 mm / 3,3 mm
- Rated working pressure (NWP): 0 ... 21 bar
- Maximum pressure (MAWP): 25 bar
- Kv: > 0,250 m³/h / 0,335 m³/h
- Leakage (internal/external): 1x10⁻⁴ mbar l/s
- Linearity: < 5% F.S.
- Hysteresis: < 15%, F.S. @350Hz PWM
- Ambient temperature: -40°C up to + 125°C
- Protection class: IP6K9K
- Service life: > 3 Mio. switching cycles, > 25 Mio. control procedures

Options on request:

- Component groups with valves and sensors
- Various electrical plug connections
- Other control pressure ranges
- ATEX version for stationary applications
- Customer-specific mechanical interface

Special features:

- High control quality